



PLANNING

The **PRESENTER** must supply the following:

- theatre's plans (imperial or metric; and/or .dwg or .mcd files)
 - detailed ground plan (with seating)
 - section view (with seating)
- technical information package of the venue

Upon receipt of the above-mentioned documents, **Des mots d'la dynamite** (the **COMPANY**) will supply a study to confirm the following:

- technical feasibility of the project (preliminary plan)
- technical set-up schedule

Minimal stage requirements and scenography

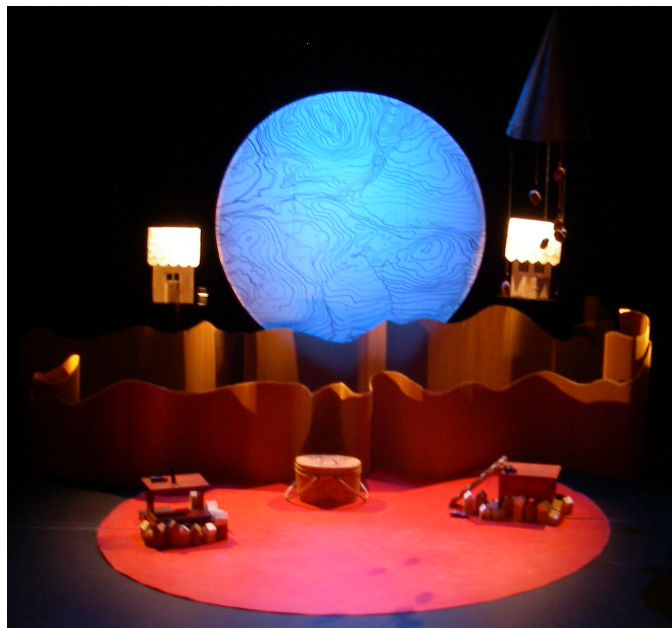
The stage set-up is flexible in a black box theatre set-up or on a proscenium stage

Stage area :

Depth - 18'0" (5,5 m)
Width - 18'0" (5,5 m)
Free height - 14'0" (4,2 m)

A circular screen with a 7'0" (2,4m) diameter is hung upstage

A light fixture
A floor carpet
Props





Public capacity and quality of production

- Maximum of 130 spectators
- The shadow projections and puppet manipulations demand a fair darkness to optimize the concentration of all, old and young.
- For the comfort of all, proper planning must be made to better improve the experience of the public. Ideally, children and parents will be welcomed in the space and invited to sit on pillows and/or foamed carpets. These will be installed on risers that rise +6 inches high (see cross-section plan).

Lighting

Equipment supplied by the Company:

- 3 Black light fixtures to be adapted to house
Lighting gels
- 4 Par Mr-16

Equipment supplied by the Presenter:

- A lighting board with a minimum of 24 channels
- 24 2.4 kW dimmers, control with **DMX 512 PROTOCOL**
- 17 Profiles/Leko
- 14 Fresnels 1 k
- + all frames and safety cords for house instruments
- 3 adaptators AC to Twist Lock
- 2 Side Booms, straight pipe type, or cage type, 4 feet(1,2m) high minimum
- 2 Floors Stands



Sound

Equipment supplied by the Company:

Fostex Monitor
2 microphones
1 Sound effects pedal

Equipment supplied by the Presenter:

Mixer with minimum 6 INPUTS AND 3 OUTPUTS
2 full range loudspeakers, frequency 20Hz-20 KHz to be placed on the floor
(stage left and right), to be used as FOH
2 CD players with Auto cue (Backup playback system)
2 Direct boxes
XLR Cable
¼ Jack cables

Sound and light control position

The show is run by the company stage manager, controlling lights and sound.

Mixing position must be behind the audience, or stage left or right.



Basic schedule and staff

The following schedule pre-supposes that there has been a pre-hang of all light fixtures.

- Stage and sound set-up/ focus/ test – 4 hours
 - 1 Head electric
 - 2 polyvalent technicians
 - 1 Head sound
- Show-call - 1 hour
- Ouverture des portes 5' before showtime (or as agreed)
- **Show (35 minutes)**

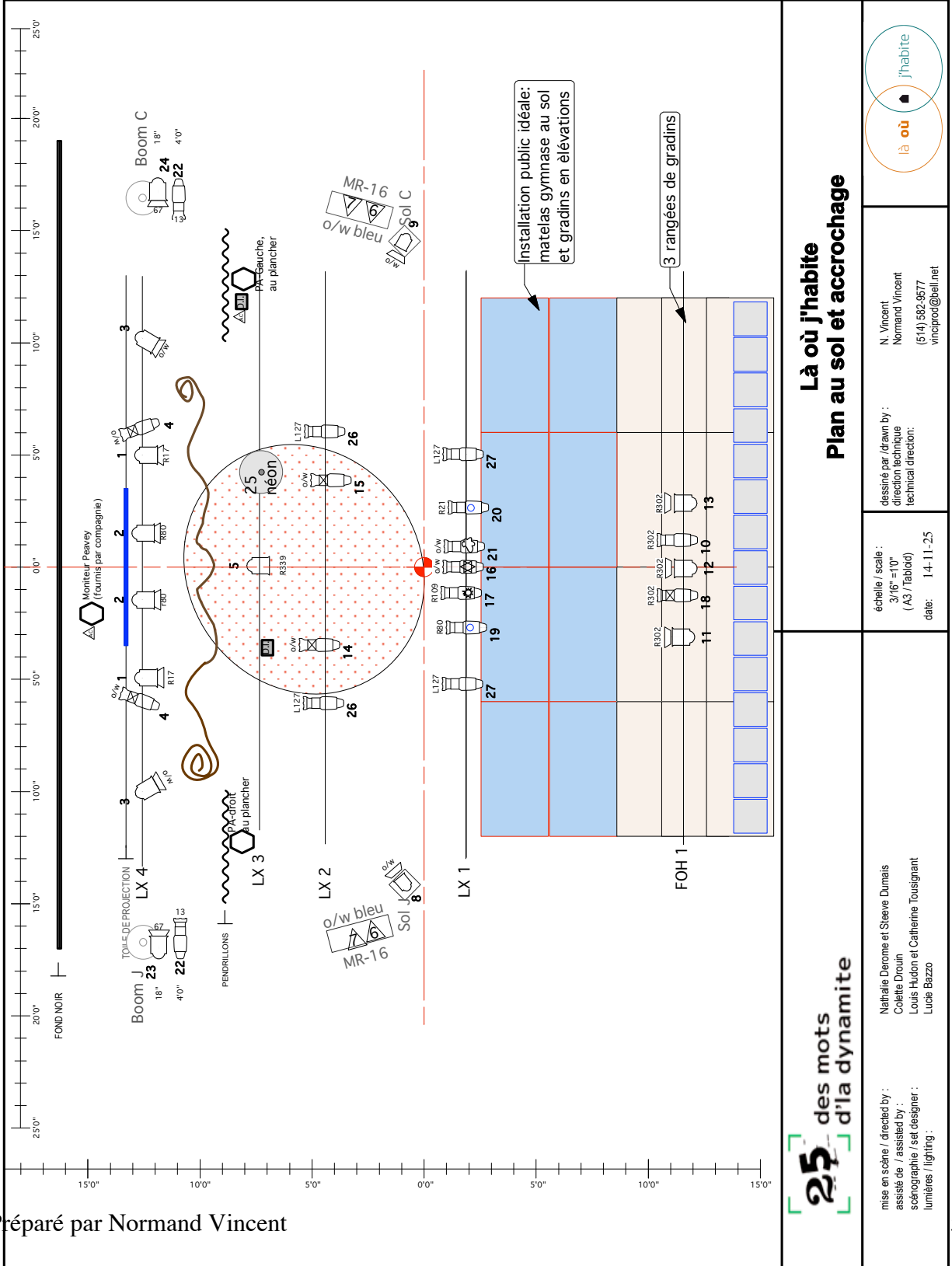
Dressing room

- 1 heated dressing room furnished with mirrors, washroom and shower with hot water, soap and towels

For more technical information regarding the production, please contact:

Direction technique : Normand Vincent,
514-582-9577
nvinci@sympatico.ca

Coordonnatrice générale et administrative :
Céline Lapointe
514-528-7070
info@desmotsdladynamite.com



Préparé par Normand Vincent

25 des mots d'la dynamite

Nathalie Drome et Steve Dumais
Colette Drouin
Louis Hudon et Catherine Tousignant
Lucie Bazzo

mise en scène / directed by :
assisté de / assisted by :
scénographie / set designer :
lumière / lighting :

**Là où j'habite
Plan au sol et accrochage**

dessiné par / drawn by :
direction technique
technical direction:
date: 14-11-25

N. Vincent
Normand Vincent
(514) 582-9577
vinciprof@bell.net

